



[Start over](#) [Save session](#) [Help](#) [MAIN MENU](#)

Look up an institution

Final Release Data [\(Change\)](#)

1. Select Institutions

My Comparison Institution - None Selected [i](#)
 Select Institutions - You have selected 1 institution(s)

[ADD](#)
[VIEW/MODIFY](#)

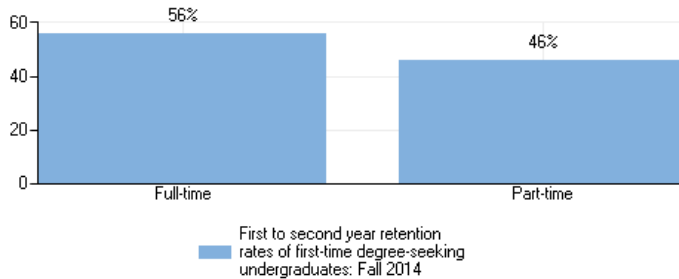
How would you like to select institutions to include in your data file/report?
[i](#) By Names or UnitIDs [i](#) By Groups [i](#) By Variables [i](#) By Uploading a File

George C Wallace State Community College-Dothan [\(change institution\)](#)

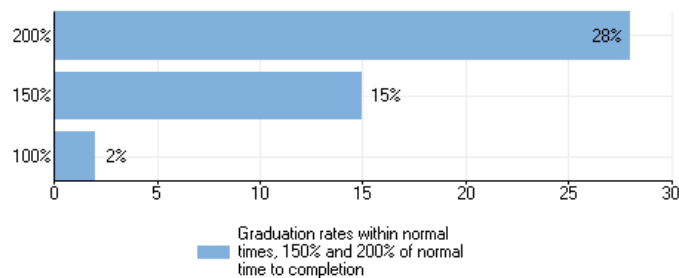
[Institution Profile](#) | [Reported Data](#) | [Data Feedback Reports](#) [Expand All](#) | [Collapse All](#) | [Print](#) | [Download PDF](#)

- [Institution Characteristics](#)
- [Student Charges](#)
- [Student Financial Aid](#)
- [Net Price](#)
- [Enrollment](#)
- [Retention and Graduation](#)

First to second year retention rates of first-time degree-seeking undergraduates: Fall 2014



Graduation rates of full-time, first-time, degree/certificate-seeking undergraduates within normal time, and 150% and 200% of normal time to completion: 2010 cohort



Graduation rates of full-time, first-time, degree/certificate-seeking undergraduates within 150% of normal time to program completion, by gender and race/ethnicity and transfer out-rate: 2011 cohort

Overall graduation rates	Rate
Total	15%

Men	20%
Women	12%
American Indian or Alaska Native	
Asian	50%
Black or African American	11%
Hispanic or Latino	15%
Native Hawaiian or Other Pacific Islander	
White	17%
Two or more races	21%
Race/ethnicity unknown	0%
Nonresident alien	
Transfer out-rate	17%

Graduation rates are based on the student's completion status as of August 31, 2014.

 [Completions](#)

 [Human Resources](#)

 [Finance](#)

IES NCES National Center for Education Statistics

Explore the Institute of Education Sciences

IES

[Home](#)

[About](#)

[Office of Director](#)

[Deputy Director for
Administration and Policy](#)

[Deputy Director for
Science](#)

[Standards and
Review Office](#)

[Publications](#)

[Data](#)

[Funding](#)

[News](#)

IES Centers

[NCEE](#)

[NCER](#)

[NCES](#)

[Home](#)

[About](#)

[Programs](#)

[Publications](#)

[Data](#)

[School Search](#)

[News](#)

[NCSER](#)

IES Policies and Standards

[Public Access Policy](#)

[Privacy and Security
Policies](#)

[NCES Statistical Standards](#)

[Peer Review Process](#)

[ED Data Inventory](#)

[Fed Stats](#)

Contact Us

[U.S. Department of
Education](#)

Additional Resources

[ERIC](#)

[Sitemap](#)

[Organizational Chart](#)